

# TEST SPECTRUM

## VectorPort

### PATTERN CONVERTER

*VectorPort is a versatile, low-cost test development tool for converting vectors to targeted ATE tester formats, including pattern, timing, and pinmap data. VectorPort can read and write most major formats in both parallel (Flat) vectors and serial (SCAN) vectors.*

## FEATURES

### General

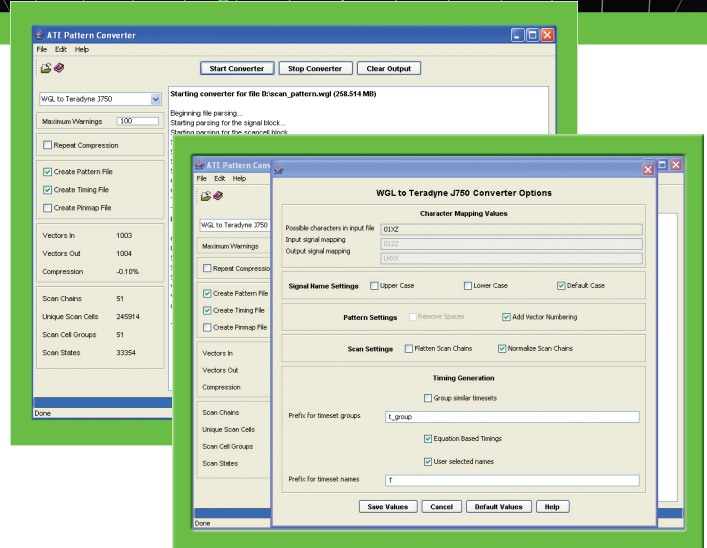
- GUI driven, no command files required
- Windows, Linux & Solaris supported
- Standard GUI Installer
- Optimized to maximize speed and minimize system resources
- Capability to do batch mode processing

### Readers

- Ability to read files based on WGL, STIL, and others
- Support Parallel (Flat) and Serial (SCAN) vectors
- Support compressed file formats (.gzip, .zip)
- Support widely used SCAN formats, including FastScan and TetraMAX

### Writers

- Ability to generate pattern, timing, and pinmap information for major ATE test platforms, including Agilent, Credence, LTX, and Teradyne
- Additional writer specific options are available



### Scan

- Option to normalize scan chains to the longest scan chain length, or keep them at their defined length
- Ability to flatten scan chains into parallel vectors

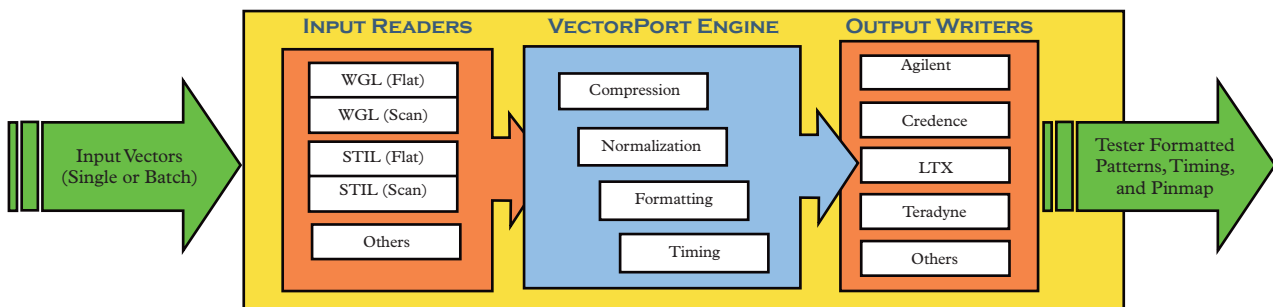
### Timing

- Absolute or equation based timings
- Ability to rename timesets as needed

### Patterns

- Repeat compression capability
- Formatting options, such as white space removal between signal columns and choice of case for signal names

Please visit our web site at [www.testspectrum.com](http://www.testspectrum.com) for additional information.



## TEST SPECTRUM INC.